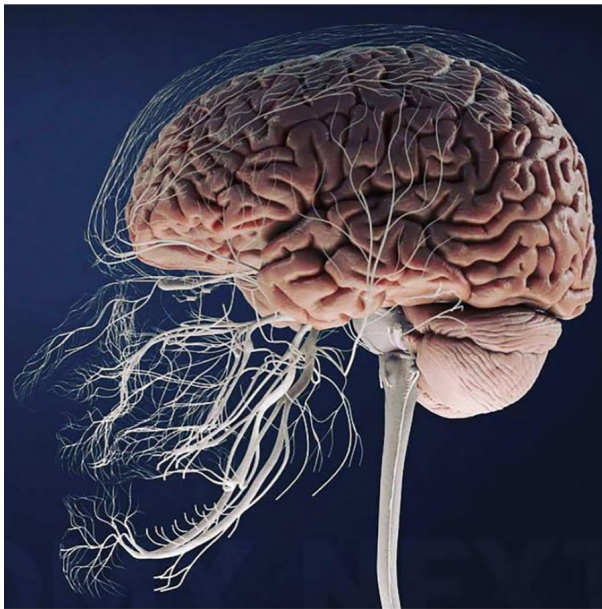


Aromatic Training Kit Instructions

This kit is designed to walk you through the most complex aspect of Interpening, the cannabis sommelier process of aroma scent perception. As a cannabis sommelier the most important aspect of the job is guiding people to the herb that is right for them. Learning how to do this is important, because there are thousands of cannabis types, with different effects, unreliable strain names, limited lab testing, etc. The key to overcoming these complexities is learning how to interpret the terpenes – interpening – which will help you predict the psychotropic effects of any hybrid type.



Aroma Perception: This begins with “smelling,” but “smell type” is not the goal here. You should smell the different terpenes (1st cranial nerve – olfactory), be able to identify them, and know what their smells are clues for. Becoming attuned to your 5th cranial nerve, the trigeminal nerve (TN), and perceiving where the aroma is physically felt in different areas of your face (aroma perception), is the main aspect of Interpening methodology. Discovering your “6th sense” can take some time and practice.

The goal is to make a determination of where you perceive the aroma between the maxillary (bottom of nose) and ophthalmic (top of nose) branches of your TN .

Trigeminal Nerve Stimulation within the BLM / NLM Spectrum

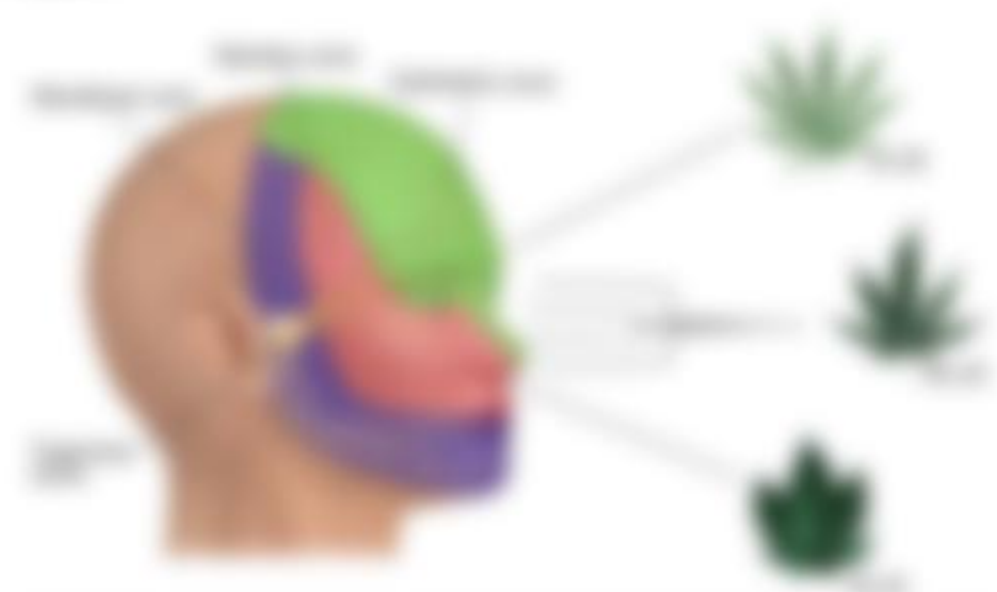
Broad Leaf Marijuana: BLM varieties contain terpene characteristics that are very deep, rich, and earthy, with leather, chocolate, and tobacco aromas. These aromas stimulate the very bottom of the nose, the maxillary zone. The smell can feel so low that it can be perceived hovering an inch in front of the nostrils and upper lip.

Narrow Leaf Marijuana: NLM varieties contain terpene characteristics that are very sharp, bright, light, and vibrant, with citrus, pine, and floral aromas that stimulate the very top of the nose, between the eyes, and even into the forehead, the ophthalmic

FULL INSTRUCTIONS INCLUDED WITH KIT PURCHASE.

© 2018 [illegible]

Full Instructions: [illegible text describing the kit's use and safety instructions]



Aroma Perception Technique

1. **Step 1:** Prepare the samples by adding the essential oils to the water in the beakers. Stir well to ensure the oils are dispersed in the water.
2. **Step 2:** Place the beakers on the table and allow the samples to sit for 5 minutes. This allows the aromas to stabilize and become more noticeable.

FULL INSTRUCTIONS INCLUDED WITH KIT PURCHASE.

3. **Step 3:** Take a deep breath and inhale the aroma from the beaker. Note the scent and how it makes you feel. This is your initial perception of the aroma.
4. **Step 4:** Repeat the process for each of the other samples. Compare the scents and note any differences. This is how you perceive the aromas relative to each other.



The Terpenes in Your Kit and Where You Should Feel Them

Myrcene

Myrcene is a terpene found in many plants, including hops, lemongrass, and eucalyptus. It is known for its earthy, musky, and slightly sweet scent. Myrcene is often associated with relaxation and sedation, and it is commonly found in cannabis strains with high levels of THC.

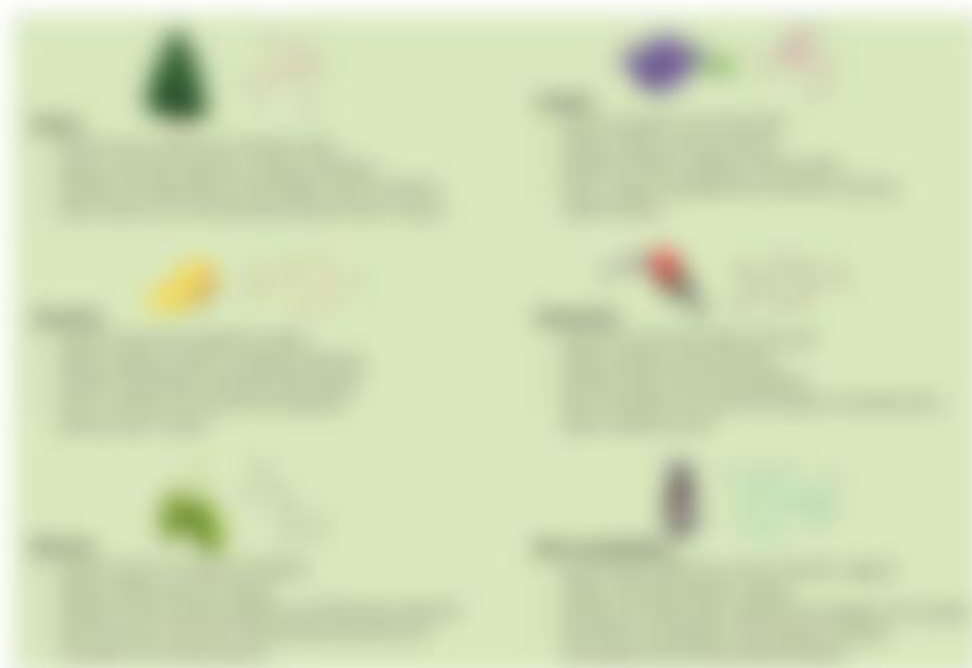
Myrcene is also found in hops, lemongrass, and eucalyptus. It is known for its earthy, musky, and slightly sweet scent. Myrcene is often associated with relaxation and sedation, and it is commonly found in cannabis strains with high levels of THC.

FULL INSTRUCTIONS INCLUDED WITH KIT PURCHASE.

Terpene Profile

Myrcene is a terpene found in many plants, including hops, lemongrass, and eucalyptus. It is known for its earthy, musky, and slightly sweet scent. Myrcene is often associated with relaxation and sedation, and it is commonly found in cannabis strains with high levels of THC.

Myrcene is also found in hops, lemongrass, and eucalyptus. It is known for its earthy, musky, and slightly sweet scent. Myrcene is often associated with relaxation and sedation, and it is commonly found in cannabis strains with high levels of THC.



Solid Crystalline Terpenes

These terpenes are included in your kit because they are incredibly sharp. It is very easy to

blurred text

blurred text

FULL INSTRUCTIONS INCLUDED WITH KIT PURCHASE.

Classic OG Strains with Typicity

blurred text

blurred text

blurred text

blurred text

Tips and Keys For Interpening Cannabis Flower

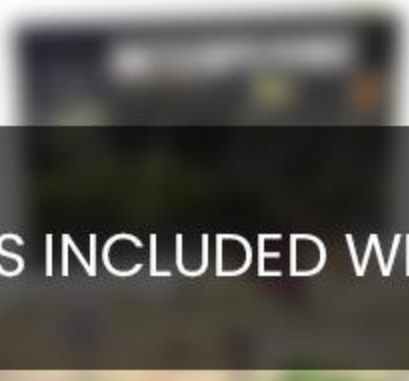
1. **Preparation of Cannabis Flower:** The first step is to prepare the cannabis flower. This involves drying the flower to remove moisture, which helps in the extraction process. The dried flower is then ground into a fine powder, which is essential for creating a uniform mixture with the solvent.
2. **Selection of Solvent:** The choice of solvent is crucial for the extraction process. Common solvents used include ethanol, butane, and CO2. Each solvent has its own characteristics and is suited for different types of cannabis products.

FULL INSTRUCTIONS INCLUDED WITH KIT PURCHASE.

3. **Extraction Process:** The extraction process involves combining the ground cannabis flower with the chosen solvent. This mixture is then heated and filtered to separate the cannabis extract from the plant matter. The resulting extract is then purified and concentrated to produce the final product.
4. **Quality Control:** It is important to perform quality control tests on the extracted cannabis. This includes testing for potency, purity, and the presence of any contaminants. These tests ensure that the final product meets the desired standards.
5. **Storage and Distribution:** The final cannabis extract should be stored in a cool, dark place to maintain its quality. It can then be distributed to various cannabis products, such as edibles, tinctures, and concentrates.

How to use the kit (instructions and manual)

How to use the kit (instructions and manual) is available in the kit. For more information, please visit our website at [www.healthykids.com](#)



FULL INSTRUCTIONS INCLUDED WITH KIT PURCHASE.



How to use the kit (instructions and manual) is available in the kit. For more information, please visit our website at [www.healthykids.com](#)

